

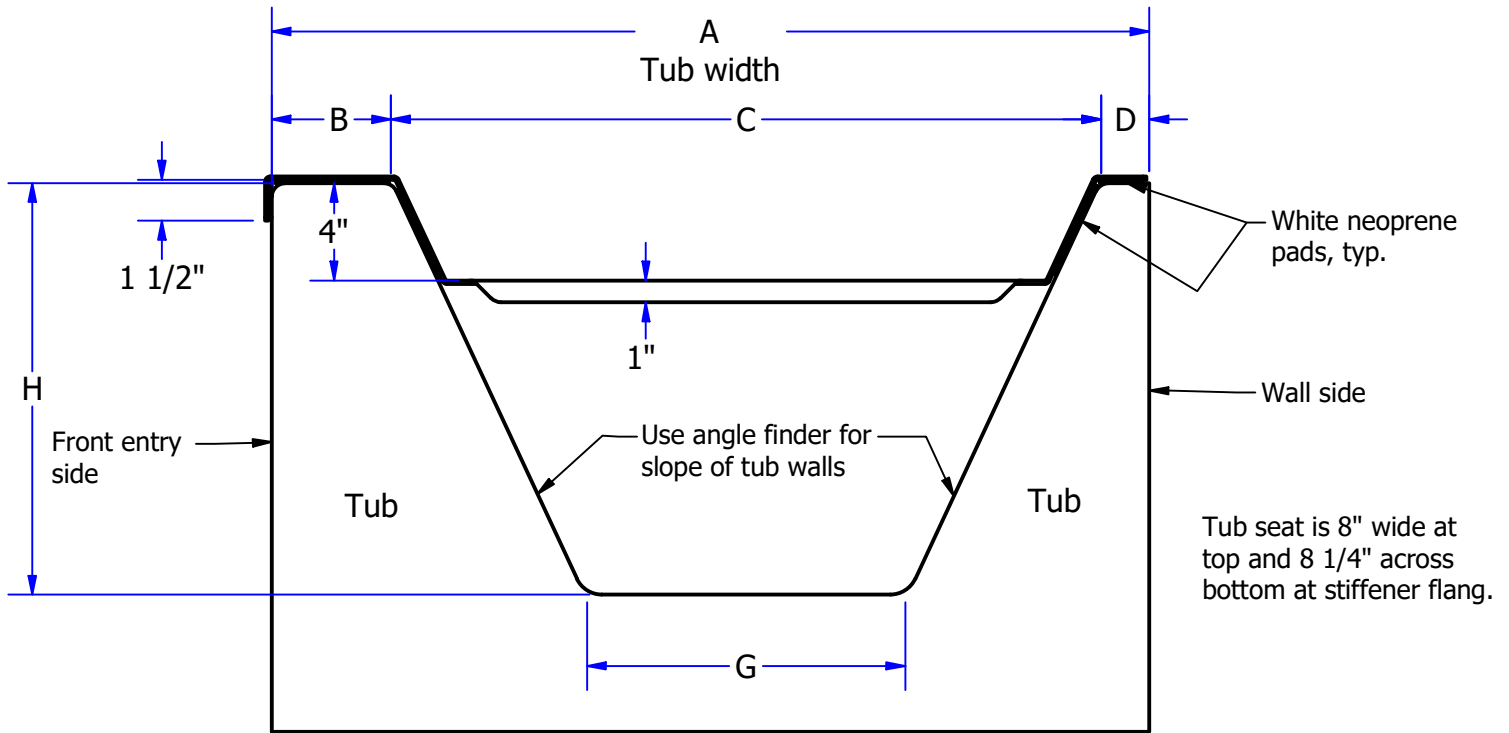


# TECHNICAL DATA SHEET

1/3/2025

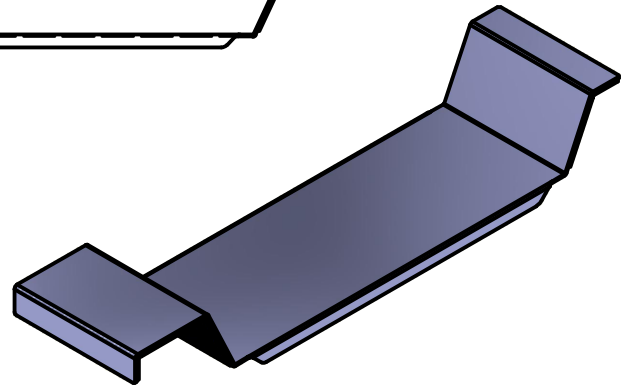
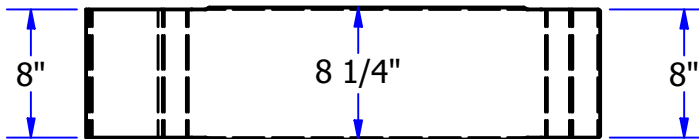
S-6095-SS

Removable stainless steel tub seat



- A = \_\_\_\_\_
- B = \_\_\_\_\_
- C = \_\_\_\_\_
- D = \_\_\_\_\_
- G = \_\_\_\_\_
- H = \_\_\_\_\_

Tub slope angle = \_\_\_\_\_ Degrees  
(Use angle finder)



## CONSTRUCTION:

- 11 Gauge type 304 stainless steel.
- One piece construction.
- Satin #4 finish.
- White neoprene pads to protect tub surface.
- 1" integral stiffening flanges (2)

## OPERATION:

Place tub seat across tub engaging u-portion of seat with front (open side) of tub and short flange towards the wall side of the tub.

Remove when not needed.

## GUIDE SPECIFICATION:

- **Must supply tub dimensions and angle of slope as listed above.**
- One piece construction.
- Type 304 stainless steel with a #4 satin finish.
- White neoprene pads fixed to tub seat to protect tub surface.